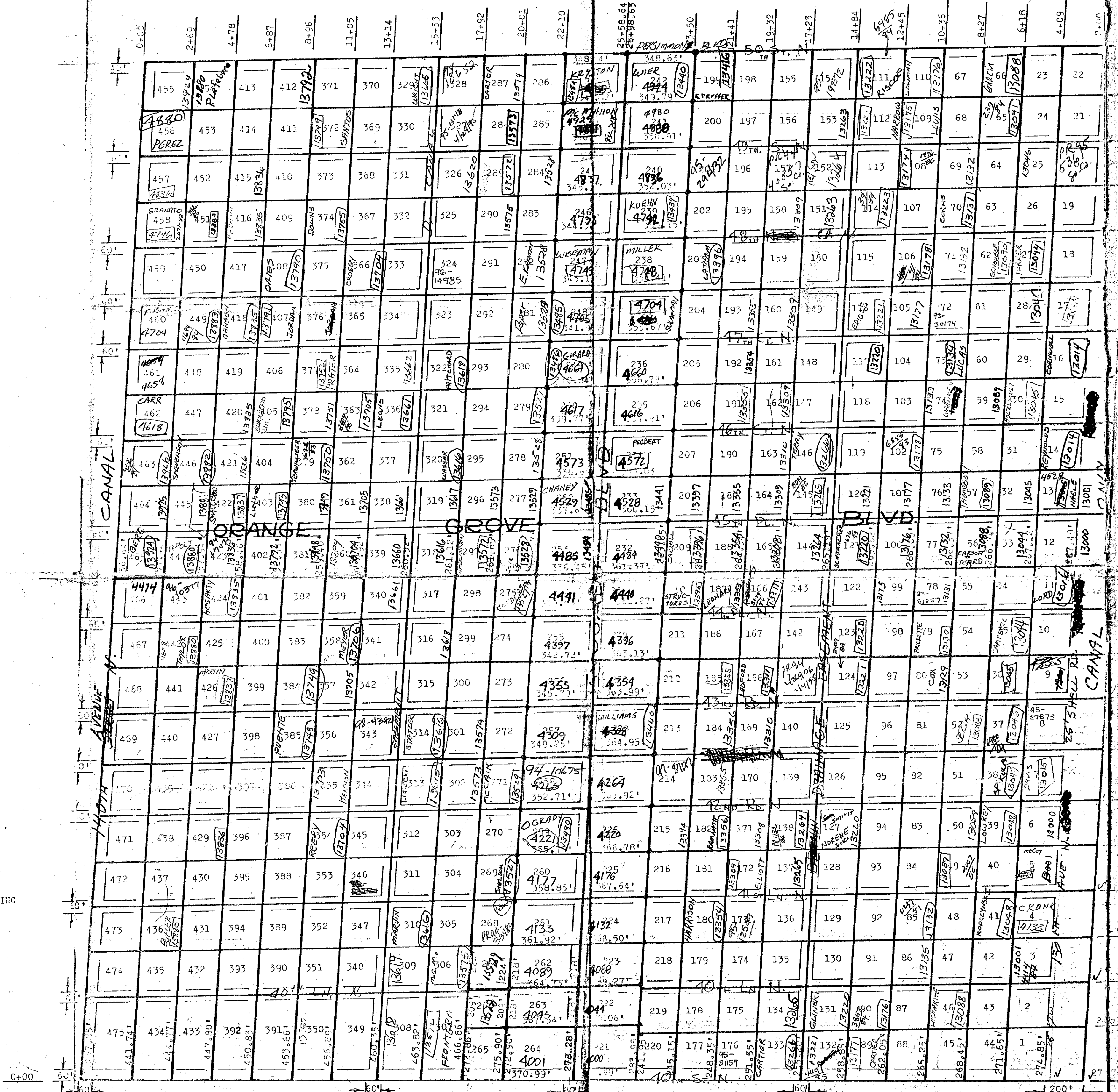


832-003

1" = 300'

DEPICTS ROAD AND DRAINAGE EASEMENTS  
DEPICTS TRACT LIMITS  
DEPICTS POINT OF BEGINNING



477-76  
2-19  
4929-58  
4225-84  
4271-70  
4273-72  
4145-42  
4011-11  
17-43  
11-30  
22-21  
1-60  
4-13  
4129-38  
4393-74  
4345-41  
4277-36  
4249-48  
4206-04  
4159-58  
4115-14  
4075-74  
4053-52  
4000  
5000

Delivered to Center of Lot on N-S boundary

All tracts in Section 9, T43S, R41E, Palm Beach County, Florida, are as measured parallel to the East-west quarter section line and West of the 60' easement line and West of the 60' easement line.

All tracts in Section 9, T43S, R41E, Palm Beach County, Florida, are as measured parallel to the East-west quarter section line and East of the 60' easement line and East of the 60' easement line.

All tracts in Section 9, T43S, R41E, Palm Beach County, Florida, are as measured parallel to the North section line and the West of the 60' easement line and the West of the 60' easement line.

All tracts in Section 9, T43S, R41E, Palm Beach County, Florida, are as measured parallel to the North section line and the East of the 60' easement line and the East of the 60' easement line.

PALM BEACH COUNTY  
PLANNING, ZONING & BUILDING DEPARTMENT  
P. O. BOX 1548  
WEST PALM BEACH, FLORIDA 33402

SECTION 9, T43S, R41E, PALM BEACH CO., FLA.

PLOT PLAN  
FOR  
ROYAL PALM BEACH COLONY, INC.



WOOD AND ASSOCIATES, INC.  
FORT PIERCE, FLORIDA

DESIGNED BY A.W. CHECKED BY H.B. DWG. NO. 0033  
SCALE 1" = 300' DATE 8/68 SHEET 1 OF 1

PLOT PLAN  
SECTION 9, T43S, R41E  
PALM BEACH COUNTY, FLORIDA  
PREPARED FROM BOUNDARY SURVEY  
BY  
A. G. WEATHERINGTON - SURVEYOR (THIS IS NOT A RECORDED PLAT)

10/24/68  
10/24/68